

# EMPREGO e o SETOR PRIMÁRIO

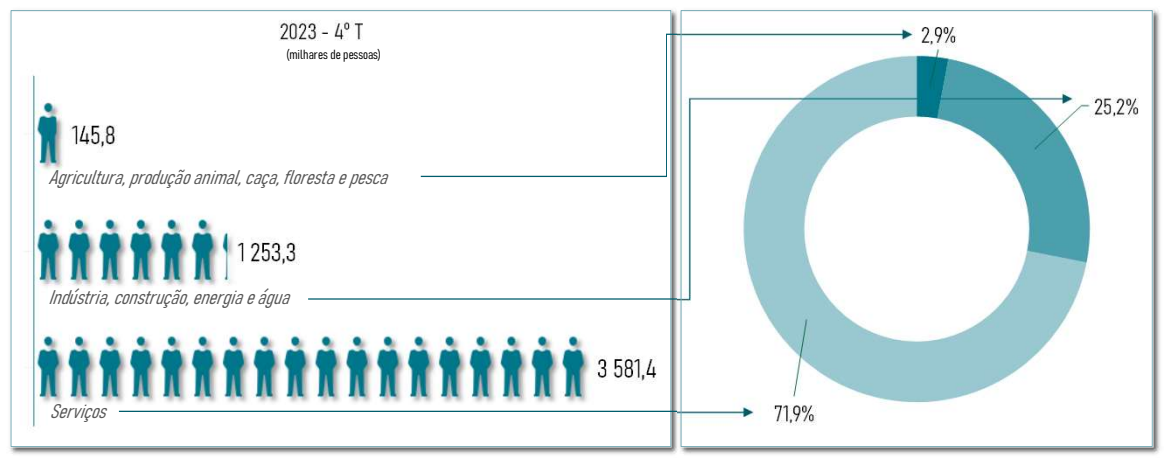
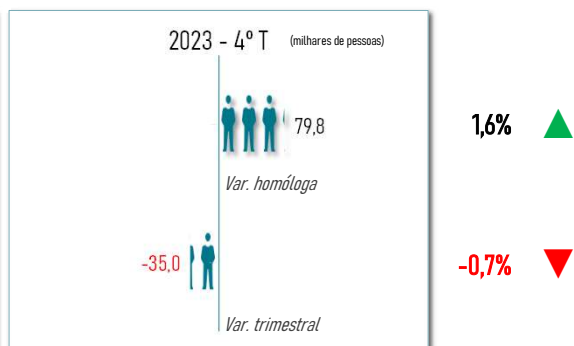
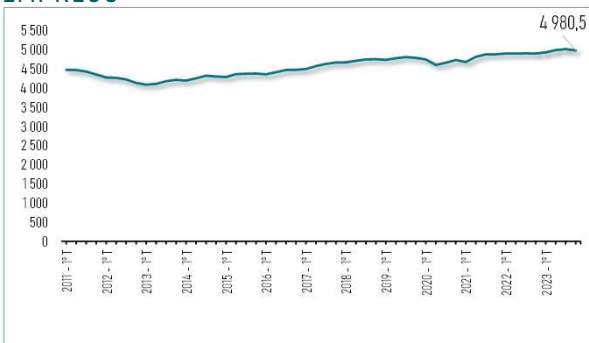


Emprego - 2023 - 4º Trimestre

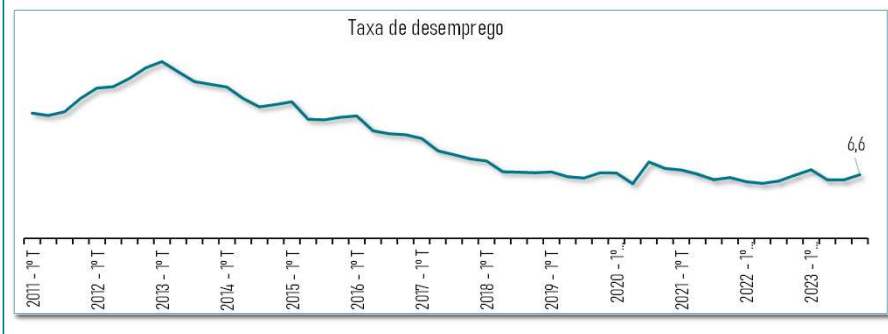
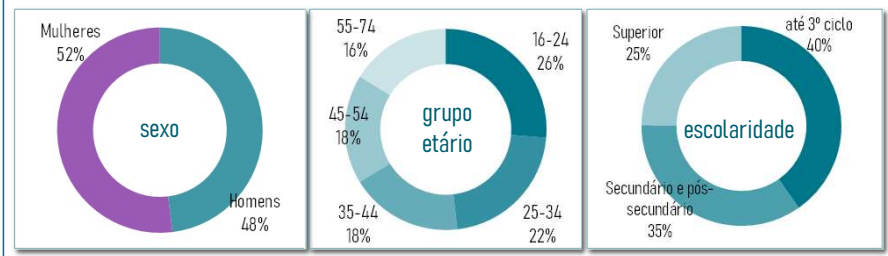
	PORTUGAL	NORTE	CENTRO	OESTE e VALE TEJO	GRANDE LISBOA	PENÍNSULA SETÚBAL	ALENTEJO	ALGARVE	RA AÇORES	RA MADEIRA
População total (16 e mais anos) (x 1000)	8 872,6	3 119,2	1 452,9	710,5	1 752,7	647,9	398,0	363,9	205,0	222,5
População ativa (x 1000)	5 335,1	1 877,5	852,9	417,9	1 098,5	376,8	227,8	219,9	125,8	138,0
População empregada (x 1000)	4 980,5	1 739,5	803,8	397,1	1 025,5	347,0	214,1	206,9	117,2	129,4
Agricultura, produção animal, caça, floresta e pesca	145,8	42,4	26,0	23,5	0,0	0,0	26,0	7,5	9,0	3,4
Indústria, construção, energia e água	1 253,3	573,2	248,2	103,7	148,2	62,0	48,2	30,2	18,9	20,7
Serviços	3 581,4	1 123,9	529,6	269,9	876,3	278,0	139,9	169,2	89,2	105,3
População desempregada (x 1000)	354,6	138,0	49,1	20,8	73,1	29,8	13,7	13,0	8,7	8,6
Taxa de desemprego (%)	6,6	7,3	5,8	5,0	6,7	7,9	6,0	5,9	6,9	6,2
População inativa (16 e mais anos) (x 1000)	3 537,5	1 241,7	600,0	292,7	654,1	271,0	170,3	144,0	79,2	84,5

Fonte: GPP, a partir de Inquérito Emprego, INE

## EMPREGO

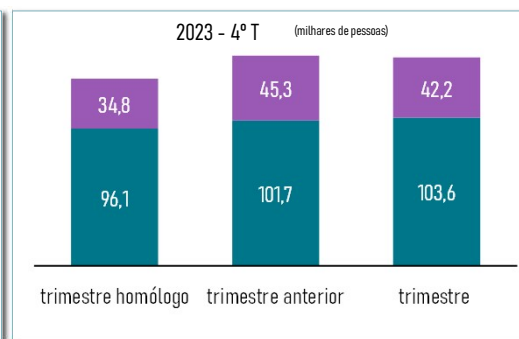
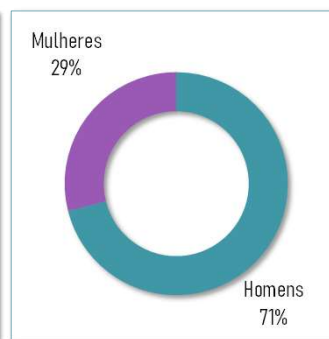
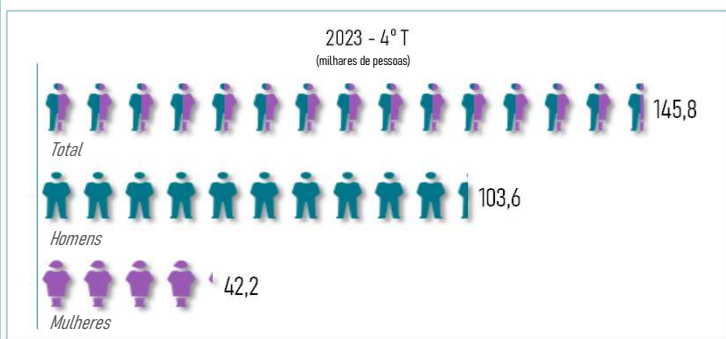
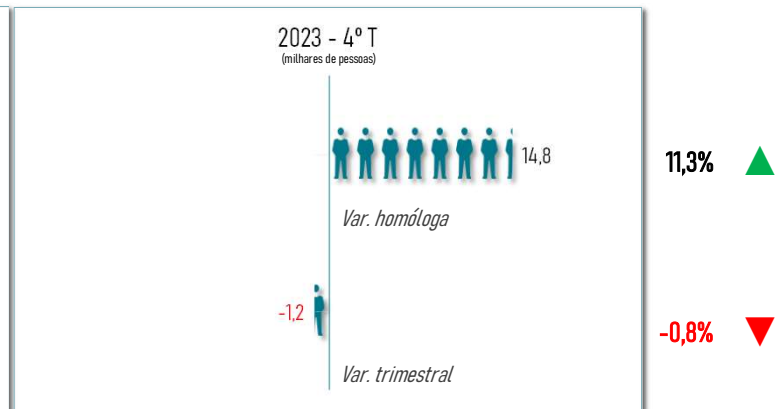
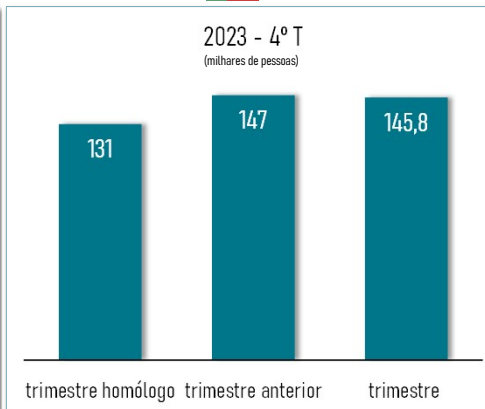
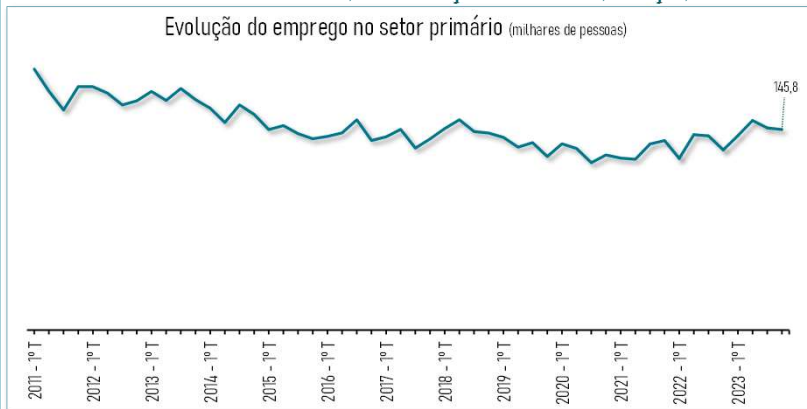


## DESEMPREGO



# EMPREGO e o SETOR PRIMÁRIO

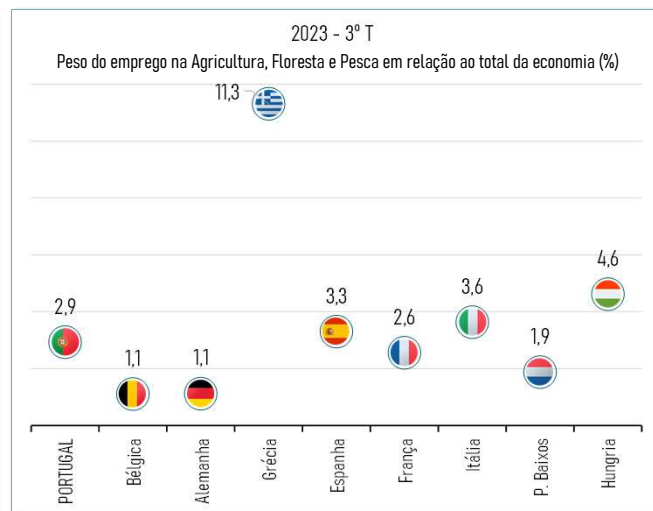
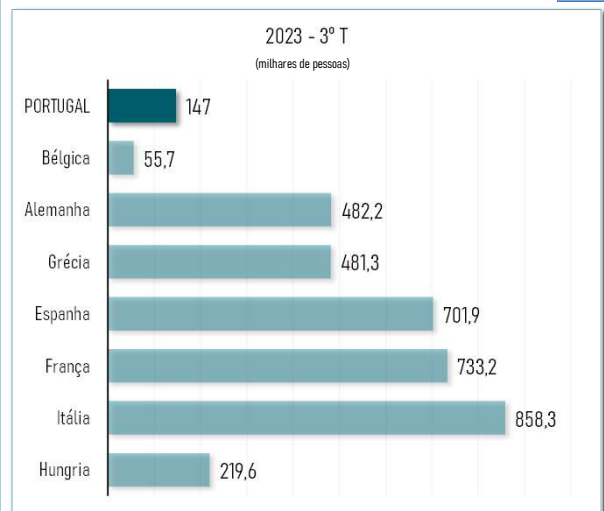
## EMPREGO na AGRICULTURA, PRODUÇÃO ANIMAL, CAÇA, FLORESTA e PÊSCA



2023 - 4º T

Taxa de variação	Homens (%)	Mulheres (%)	Tendência
Taxa de variação homóloga	7,8%	21,3%	▲
Taxa de variação trimestral	1,9%	-6,8%	▼

## EMPREGO no SETOR PRIMÁRIO na UE27



Fonte: EUROSTAT

## EMPREGO nos SETORES SECUNDÁRIO e TERCIÁRIO

